



Design Evolving through the Generations

2024 Annual Conference
of Landscape Architecture

September 12

Doubletree Suites by Hilton
Detroit, Michigan

Registration Information



ASLA
MICHIGAN

michiganasla.org



Design Evolving through the Generations

Annual Conference of Landscape Architecture

September 12, 2024

Doubletree Suites by Hilton | Detroit, Michigan



General Information

The Michigan Chapter of the American Society of Landscape Architects invites you to join us in Detroit for our Annual Conference of Landscape Architecture on Thursday, September 12, 2024. We are excited to share industry and Michigan Chapter updates, panel discussions with leaders who will provide unique and thought-provoking perspectives, as well as opportunities to network with fellow industry partners. Register today to join us.

REGISTRATION

Registration fees include all educational sessions as well as meals and refreshment breaks throughout the conference. To register, click the link below. Separate registration required for LA Ride.

Early registration ends August 29, 2024. After August 29, an additional \$30 will be added to all registration fees.

Michigan ASLA Member	\$195
Retired Current or Former ASLA Member	\$145
Student Michigan ASLA Member	\$60
Non-Michigan ASLA Member	\$250

CONTINUING EDUCATION

The Michigan Chapter- American Society of Landscape Architects is a LA CES approved provider of Professional Development Hours (PDH). Approved hours will be listed by lecture below in the conference agenda.

ATTIRE

The suggested dress is business or business casual.

LOCATION & ACCOMMODATIONS

DoubleTree Suites by Hilton Detroit Downtown – Fort Shelby
525 W. Lafayette Blvd.
Detroit, MI 48226

DoubleTree Suites is offering conference guests a special guest room rate of \$215 until August 12, or until sold out, whichever comes first. To make your reservation, [click here](#) to access our special booking link.

PARKING

Prior to parking, visit the hotel front desk to pay for and receive a parking ticket to access the hotel's gated parking lot. Public parking lots are also available in the area and range from \$5-\$20 per day.

Hotel Guest Overnight Parking: \$32 self-park, \$44 valet

Hotel Day Parking: \$15 self-park, \$22 valet

SPONSORSHIP OPPORTUNITIES

Michigan ASLA is seeking support for this special event by offering a variety of sponsorships and exhibit display opportunities. [Click here](#) for more information.



CLICK HERE TO REGISTER



Design Evolving through the Generations

Annual Conference of Landscape Architecture

September 12, 2024

Doubletree Suites by Hilton | Detroit, Michigan



Agenda

Wednesday, September 11, 2024

4:00pm – 5:30pm

Walking Tour, Presented by SmithGroup

Visitors and locals alike will learn something new on this tour. Take a stroll around the Campus Martius area and see how iconic landscapes and sites are evolving and new sites are emerging. Tour will depart from the DoubleTree lobby.

5:30pm

Happy Hour Social

Finishing up the Walking Tour or in town early for the Conference? Join us for this informal networking gathering at Union Assembly located at 2131 Woodward Ave., Detroit. Beverages and food available for purchase.

Thursday, September 12, 2024

8:30am – 9:15am

Registration, Continental Breakfast & Visit Exhibits

9:15am – 9:45am

Introduction and State of the Chapter Address

9:45am – 10:30am

Break & Visit Exhibits

10:30am – 12:00pm

Designing for the Next Generation | 1.5 PDH

*Credits pending approval

Panelists: Norman Cox, PLA, ASLA, Bob Doyle, Landscape Architect, PLA, ASLA, Daniel Martin, Hon. ASLA, Vicki McGhee and Ariana Zannetti, PLA, City of Detroit

In an era marked by demographic shifts and a growing emphasis on community inclusivity, the concept of age-friendly park design is taking center stage in the realm of urban planning and recreation development. We will provide ideas and stimulate conversations that lead to understanding of future design trends



and how landscape architects can be proactive and not reactive to the planning and design solutions that enables strong professional services to clients and the public.

Our panel of design and programming leaders will discuss present and future trends for recreation, programming, volunteerism, and where they feel design and programming are headed. Here are some of the key points that will be discussed: age-friendly recreation, recreation trends and trends in ASLA and other professional organizations.

12:00pm – 1:00pm

Lunch

1:00pm – 2:30pm

Understanding Generations in the Workplace | 1.5 PDH

*Credits pending approval

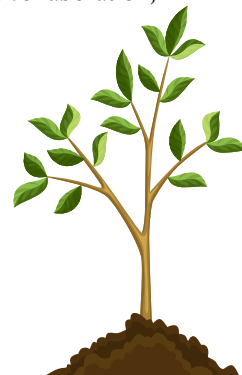
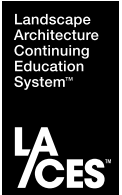
Panelists: Sandy Bliesner, PLA, LEED AP, Tim Britain, PLA, ASLA, LEED AP, Stephanie Onwenu, ASLA and Katie Toschlin, PLA, ASLA, NGICP

The workplace is more diverse than ever-especially when it comes to generational representation. Five generations currently in the workplace: Traditionalists, Baby Boomers, Generation X, Millennials, and Generation Z. There are varying beliefs, values, and attitudes between age groups that have been shaped by different experiences. Today's workplaces need to avoid stereotypes and ageism and focus on managing perceptions rather than supposed generational gaps.

Our panel of industry leaders will discuss the generational differences in the workplace and how they can significantly impact the organization's dynamics and how they provide strong professional services to clients and the public. Here are some of the key points that will be discussed: productivity and collaboration, challenges and opportunities, demographic shifts.

2:30pm – 3:00pm

Break & Visit Exhibits



[CLICK HERE TO REGISTER](#)



Design Evolving through the Generations

Annual Conference of Landscape Architecture

September 12, 2024

Doubletree Suites by Hilton | Detroit, Michigan



Agenda

Thursday, September 12, 2024 (continued)

3:00pm – 3:30pm

State of ASLA Address and Diversity, Equity and Inclusion Update

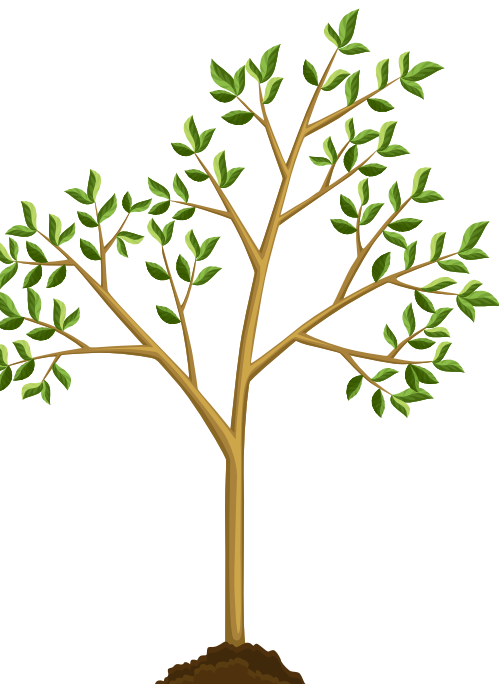
3:30pm – 4:45pm

Professional & Student Awards Presentation

4:45pm – 5:45pm

President's Reception

Join us for this networking event and enjoy light appetizers and drinks with industry friends.



LA Ride Cycle Tour | 2.0 PDH

Friday, September 13, 2024

12:00pm – 5:30pm

*Credits pending approval

Join us for the LARide Cycle Tour 2024. It is a slow to medium paced, six lecture stop, 15.5-mile bicycle tour. As we ride around the Detroit area, we will visit prominent landscape architectural public spaces that will stimulate your intellect as well as your body. At each stop you will learn what it takes to make these beautiful masterpieces and hear from the designers who made them happen.

The tour will begin and end at Tolan Park (I-75 and Mack). Separate registration required.

Registration Fee: \$35 per rider

Landscape Architecture Continuing Education System™



[CLICK HERE TO REGISTER FOR THE LA RIDE](#)

[CLICK HERE TO REGISTER](#)